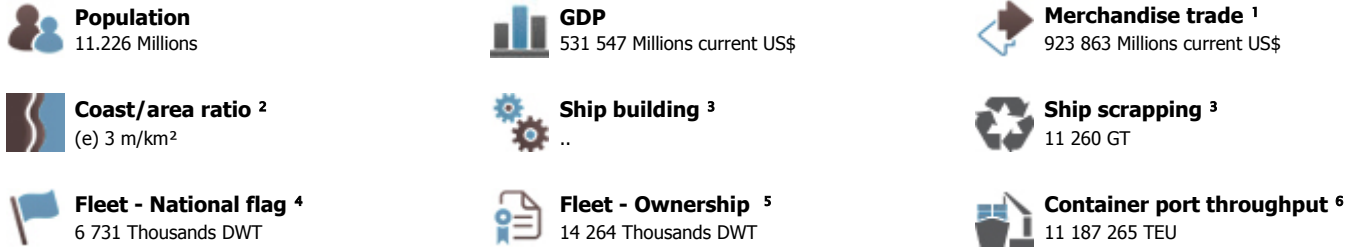
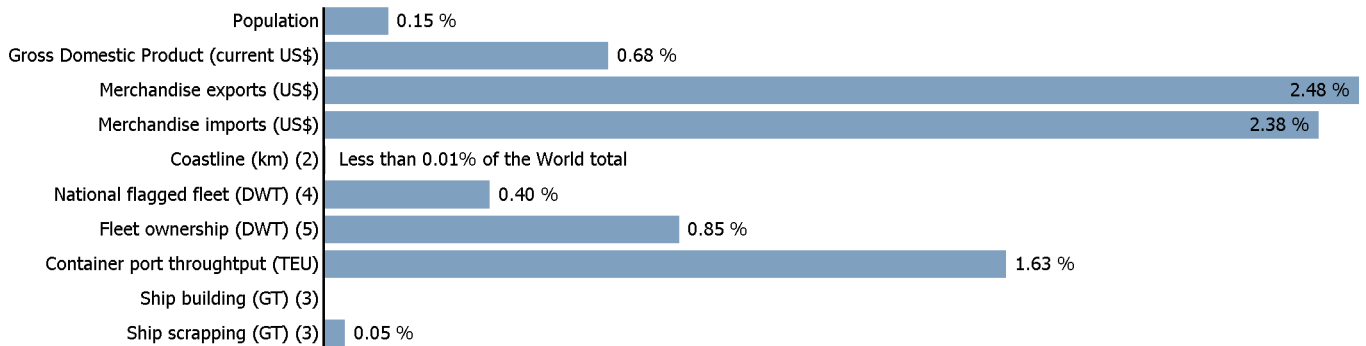


MARITIME PROFILE: BELGIUM

GENERAL INFORMATION FOR 2014



WORLD SHARES FOR 2014



INTERNATIONAL MERCHANDISE TRADE

Total merchandise trade

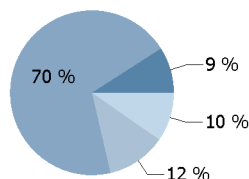
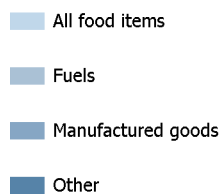
(millions of US\$)	2005	2010	2013	2014
Merchandise exports	334 400	407 692	468 760	471 384
Merchandise imports	318 700	391 177	451 677	452 479
Merchandise trade balance	15 700	16 515	17 083	18 905

+0.6 %

Merchandise exports growth rate in 2014

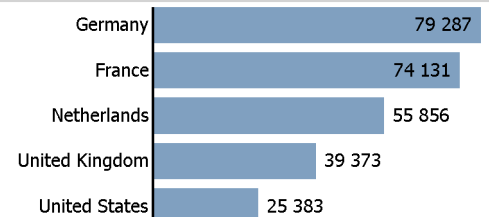
Export structure by product group in 2014

(as % of total exports)



Top 5 partners in 2014

(exports, millions of US\$)



INTERNATIONAL TRADE IN TRANSPORT SERVICES

Services exports by main category ⁷

(as % of total services)	2005	2010	2013	2014
Transport	-	27.1	21.9	(e) 20.7
Travel	-	11.6	11.8	(e) 11.5
Other services	-	55.6	61.7	(e) 63.7

+3.4 %

Transport services exports growth rate in 2014

Total trade in transport services ⁷

(millions of US\$)	2005	2010	2013	2014
Transport services exports	-	26 674	24 851	(e) 25 689
Transport services imports	-	21 293	21 863	(e) 23 472
Transport services trade balance	-	5 381	2 989	(e) 2 217

BELGIUM

NATIONAL FLEET

Carrying capacity by type of ship ⁴

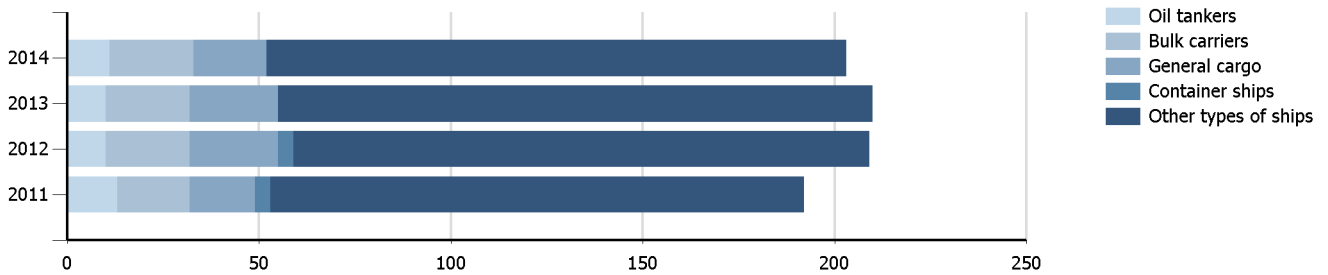
(Thousands DWT)	2005	2010	2013	2014
Total fleet	6 815.0	6 575.1	6 789.7	6 731.3
Oil tankers	3 601.0	2 168.7	1 864.1	1 866.6
Bulk carriers	2 242.0	2 730.8	3 306.7	3 306.7
General cargo	3.0	150.3	125.4	105.3
Container ships	311.0	131.0
Other types of ships	658.0	1 394.2	1 493.5	1 452.8

-0.9 %

Fleet growth rate in 2014

Fleet by type of ship ⁴

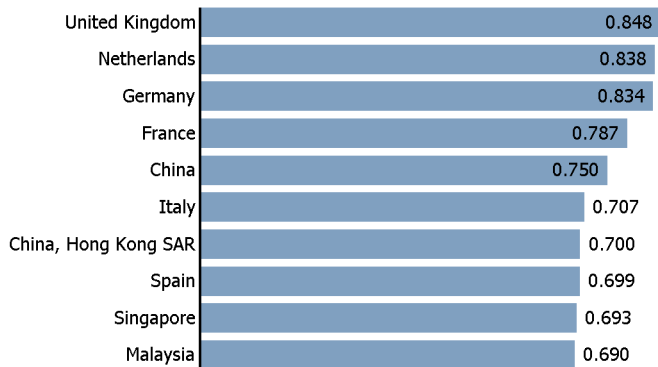
(Number of ships)



LINER SHIPPING CONNECTIVITY INDEX

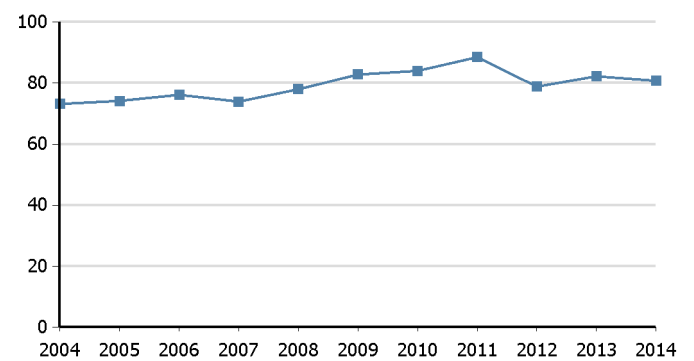
Bilateral connectivity index - Top 10 partners in 2014 ⁸

Can only take values between 0 (minimum) and 1 (maximum)



National connectivity index ⁸

Index (Maximum 2004=100) for China



BELGIUM

Source: UNCTADstat (<http://unctadstat.unctad.org>)

Notes:

- 1 Sum of exports and imports.
- 2 Coastline length based on data calculated in 2000 from the World Vector Shoreline database at 1:250,000 scale.
- 3 Propelled seagoing merchant vessels of 100 GT and above. Source: Clarksons Research.
- 4 Propelled seagoing merchant vessels of 100 GT and above, on 1 January. Source: Clarksons Research.
- 5 Propelled seagoing merchant vessels of 1000 GT and above, on 1 January. Source: Clarksons Research.
- 6 TEU: Twenty Foot Equivalent Unit. Source: UNCTAD Secretariat, derived from various sources including Dynamar B.V. Publications, terminal operators and port authorities.
- 7 Statistics presented correspond to the 6th edition of the IMF Balance of Payments and International Investment Position Manual, 2009 (BPM6, 2009).
- 8 Source: UNCTAD Secretariat, generated from data provided by Lloyds List Intelligence.
- e Estimated.

Symbols for missing values:

- 0 Zero means that the amount is nil or negligible
- .. Not available or not separately reported
- Not applicable
- ... Not available, including no quotation
- # Non-relevant calculation
- Not publishable
- *** Negative accumulation of flows; Value included in regional and global totals

Abbreviations & acronyms:

- DWT: Dead weight tons
- GDP: Gross domestic product
- GT: Gross tons
- TEU: Twenty foot equivalent unit

Disclaimer:

The designations employed and the presentation of the material on UNCTADstat do not imply the expression of any opinion whatsoever on the part of the secretariat of the United Nations concerning the legal status of any country, territory, city or area, or of its authorities, or concerning the delimitation of its frontiers or boundaries.

Where the designations "economy" or "country or area" appear in texts or tables, they cover regions, countries, territories, cities or areas.

UNCTAD strives for the highest level of accuracy and is committed to promptly correcting any errors on its part. It does not guarantee or make any express or implied representations regarding the accuracy, reliability, correctness, fitness for use for a particular purpose, or otherwise, whatsoever, of any of the tables in UNCTADstat.

Generation date: 29 March 2016